

ValueSpec

ValueSpec is an advocacy of NELTEX to encourage Designers, Developers & Stakeholders to place Value in their Specifications. The notion is: "To get the right Quality, everyone must place Value on Specification Writing."

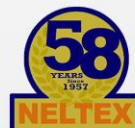
PRessureLine Specification

Pressureline Pipe	Pipe to conform to ISO 1452 / PNS 65: 1993
Composition	Made with 90% K65 Resin by Mass.
Jointing	Gasket Type: Machine Installed Fixed Seal Sockets. Gaskets to be made of EPDM Rubber homogeneously bonded to a stiff PP ring.
Toxicity	Pipes to be Heavy Metal Free (HMF) as validated through Inductively Coupled Plasma Optical Emission Spectrometry (ICP OES) method. (Mercury, Cadmium, Tin & Lead must not be present)
Markings	Pipes to be mark using Continuous Ink Jet (CIJ) Printing Method with traceable codes.

NOMINAL SIZE	Minimum Wall Thickness		
	PNS 65: 1993		ISO 1452
	Series 8 SDR 17	Series 10 SDR 21	Series 8 SDR 17
63mm	3.6mm	3.0mm	3.8mm
75mm	4.3mm	3.6mm	4.5mm
90mm	5.2mm	4.4mm	5.4mm
110mm	6.3mm	5.3mm	6.6mm
160mm	9.2mm	7.7mm	9.5mm
225mm	12.9mm	10.8mm	13.4mm
280mm	16.0mm	13.5mm	16.6mm
315mm	18.0mm	15.2mm	18.7mm
355mm			21.1mm
400mm			23.7mm
450mm			26.7mm
500mm			29.7mm



NELTEX is the largest Plastic Pipe manufacturer in the Philippines with over 30,000MT production capacity of HMF PVC Pipes & Fittings. We introduced Plastic Piping to the country in 1960 & we are Proud2B both market & innovation leader to date.



Neltex Development Company, Inc. 26th Floor, Unit A,
Washington Tower, Asiaworld City, Tambo Paranaque
Tel. No: (02) 879 - 7777
Fax No: (02) 879- 3777

Visit our website and facebook page:

www.neltex.com
www.facebook.com/neltexpipes

RELAX!

Naka **PR**essure**Line** Ka.



NELTEX

PRessureLine

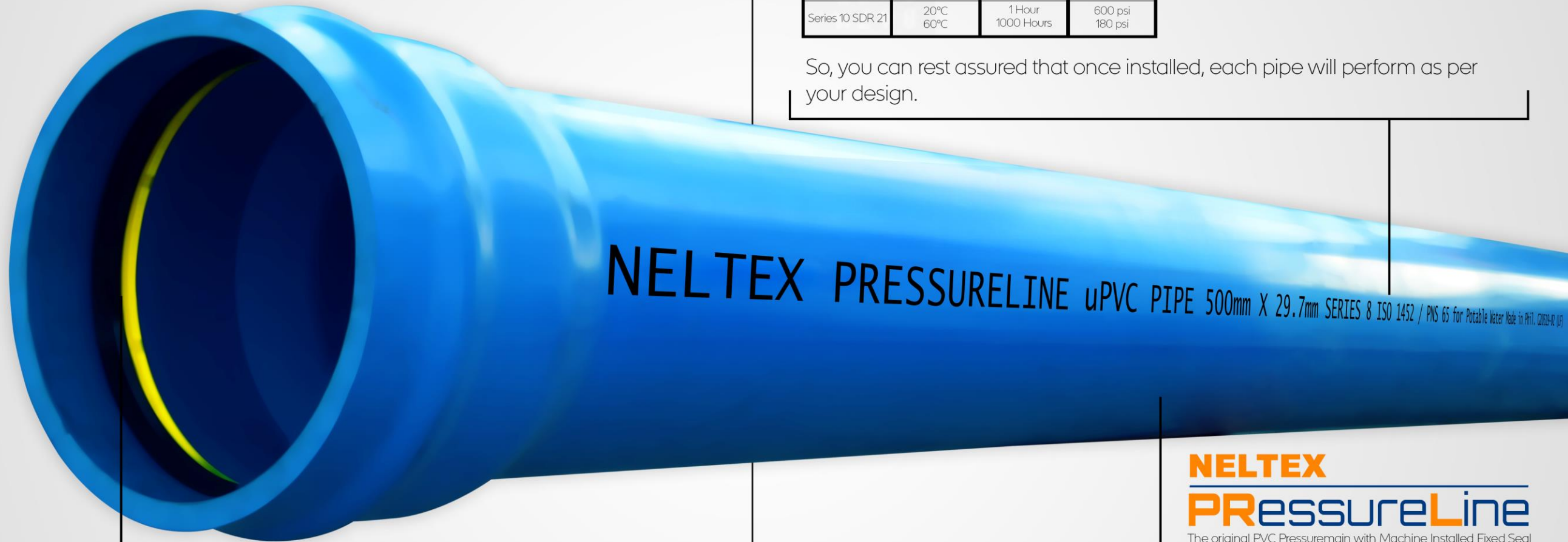
The original PVC Pressuremain with Machine Installed Fixed Seal

RELAX!

Let **PR**essure**Line** handle the Pressure!

WATER is a commodity that is quick becoming **SC**ARCE.

As such, selecting the Piping System that will convey this life giving resource is more & more becoming a **H**igh **P**ressure **T**ask.



50 Years Service Life

PRESSURELINES are tested following ISO 1452:

	TEMP	TIME	TEST PRESSURE (psi)
Series 8 SDR 17	20°C	1 Hour	760 psi
	60°C	1000 Hours	220 psi
Series 10 SDR 21	20°C	1 Hour	600 psi
	60°C	1000 Hours	180 psi

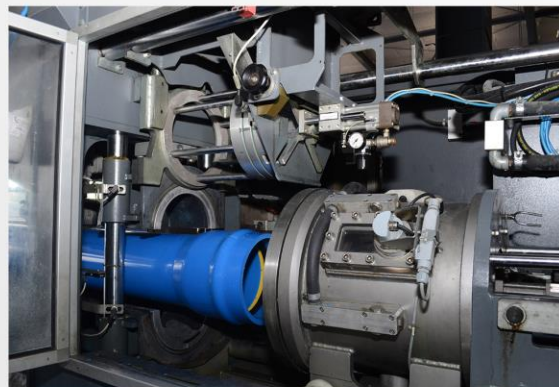
So, you can rest assured that once installed, each pipe will perform as per your design.



Lower NRW

Pressureline Gaskets are attached to the pipe simultaneously with the formation of each socket. This is in contrast to conventional systems wherein the gaskets are joined to the pipe in the jobsite. In these instances, jobsite debris will lodge between the gasket & socket; the root cause of NRW from Pipe Joints.

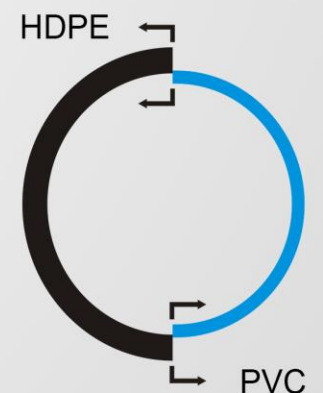
Since Pressureline Sockets are formed inside the factory, there will be no debris in the gaskets; thus ensuring leak-free joints.



Lower OPEX

Pressureline have superior tensile strength vs HDPE pipes. This means you can use 1 size smaller Pressurelines vs HDPE pipes. eg: PRL 400 SDR 17 = HDPE 450mm SDR11

Higher effective hydraulic capacity also lead to lower pump cost over time.



NELTEX
PRessure**Line**
The original PVC Pressuremain with Machine Installed Fixed Seal